

S 39 SX

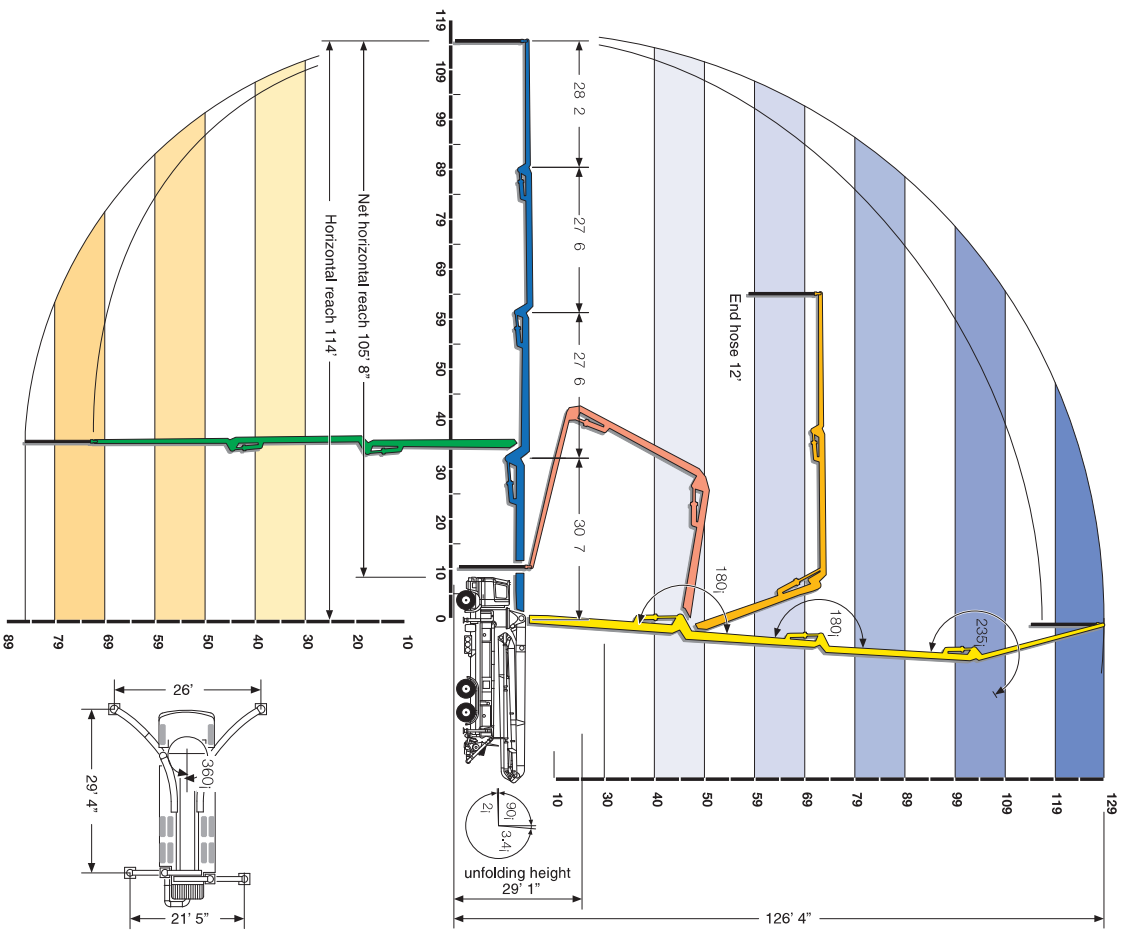
SPECIFICATIONS

	U.S.	Metric
Vertical Reach	126' 4"	38.5 m
Horizontal Reach	114 ft	34.7 m
Below Grade Reach w/ Tip Hose	89 ft	27.1 m
Pipeline Diameter	5 in	125 mm
Boom Type/ Sections	Full Articulation, Roll & Fold/ 4	
Boom Rotation	740 degrees	
Unfolding Height	29' 1"	8.8 m
Outrigger Type- Front	Super X Outriggers, Fully Hydraulic, Extension & Jacking	
Outrigger Type- Rear	Hydraulic Extension & Jacking	
Outrigger Soil Pressure w/o Dunnage (front/rear)	322/304 psi	22.2/21 bar
Outrigger Soil Pressure w/ Dunnage (front/rear)	74/70 psi	5.1/4.8 bar
Outrigger Width, Front	26 ft	7.9 m
Outrigger Width, Rear	21' 5"	6.5 m
Outrigger Length	29' 4"	8.9 m

PUMP SPECIFICATIONS

	U.S.	Metric
Theor. Concrete Output	173 cu yds/h	132 cu m/h
Max. Pressure on Concrete	1169 psi	80 bar
Max. Strokes Per Minute	18	
Max. Aggregate size	25.2 in	63.5 mm
Material Cylinder Diameter	10 in	254 mm
Material Cylinder Stroke	98 in	2500 mm
Differential Cylinder Diameter	4.7 in	120 mm
Maximum Oil Flow	5 gal/min	18.9 l/min
Hydraulic Circuitry Type	MPS	
Valve Type	B Rock	

*Pump specifications are for standard units. Other units are available. Specifications are subject to change without prior notice.



SCHWING